



MAIN INFORMATION		Vaschetta 1 L otto c.s.
Code		400.000

IMAGE



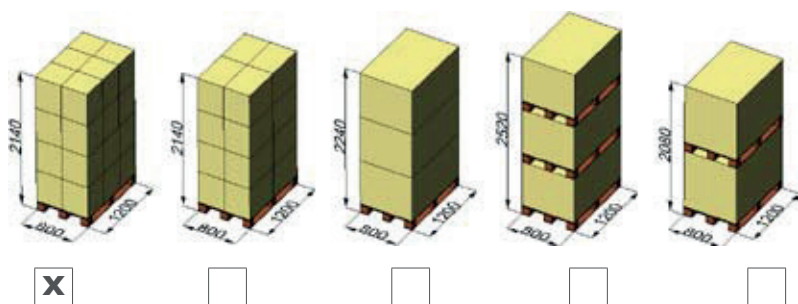
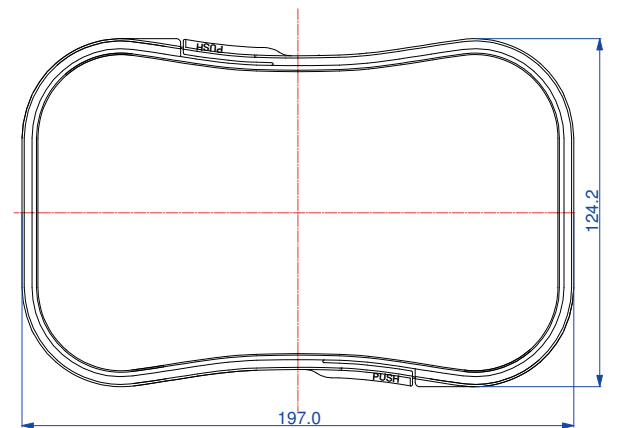
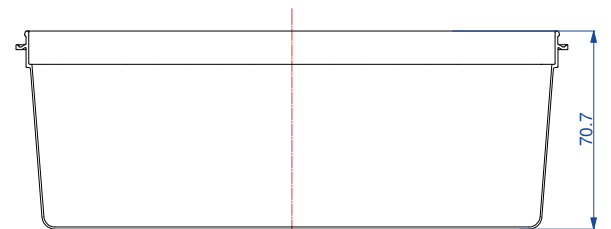
RAW MATERIAL		CLOSURE SYSTEM	
PP - Polypropylene	X	Snap + Tamper evidence	X
PS - Polystyrene		Membrane seal	
PE - Polyethylene		Easy open Aluminum	
Food Approvals			

DIMENSION		LID SUITABLE (Code)	
Weight (g)	38,5	401.000	
Brimful volume (ml)	1080		
Useful volume (ml)	1000		

DECORATION			
Adhesive label		Offset	
I.M.L		Skinny	
I.M.S.	X	Other	
I.M.S. barrier			

PACKING	Box		Palbox	
	400 x 400	400 x 600	800 x 1200	
	h 500	h 500	h 700	h 900
N° x box	162			
Weight box (Kg)	7,3			
Boxes x pallet	24			
Weight pallet (Kg)	180			
N° x pallet	3888			

EXTERNAL DIMENSIONS (mm)



MAIN INFORMATION		Coperchio otto	
Code	401.000		
RAW MATERIAL		CLOSURE SYSTEM	
PP - Polypropylene	X	Snap + Tamper evidence	X
PS - Polystyrene		Membrane seal	
PE - Polyethylene		Easy open Aluminum	
DIMENSION		SUITABLE FOR (Code)	
Weight (g)	16,5	400.000	
DECORATION		FOOD APPROVALS	
I.M.L	X		
PACKING		Box	Palbox
		400 x 400	800 x 1200
		h 500	h 700 h 900
N° x box	800		
Weight box (Kg)	14		
Boxes x pallet	24		
Weight pallet (Kg)	180		
N° x pallet	19200		

EXTERNAL DIMENSIONS (mm)

Technical drawing showing the lid's dimensions: width 120,5 mm, height 105,4 mm, and thickness 2,8 mm.

Five 3D isometric views of the lid on a pallet, showing different configurations and dimensions:

- View 1 (marked X): Height 2140 mm, Width 800 mm, Depth 1200 mm.
- View 2: Height 2140 mm, Width 800 mm, Depth 1200 mm.
- View 3: Height 2240 mm, Width 800 mm, Depth 1200 mm.
- View 4: Height 2520 mm, Width 800 mm, Depth 1200 mm.
- View 5: Height 2080 mm, Width 800 mm, Depth 1200 mm.